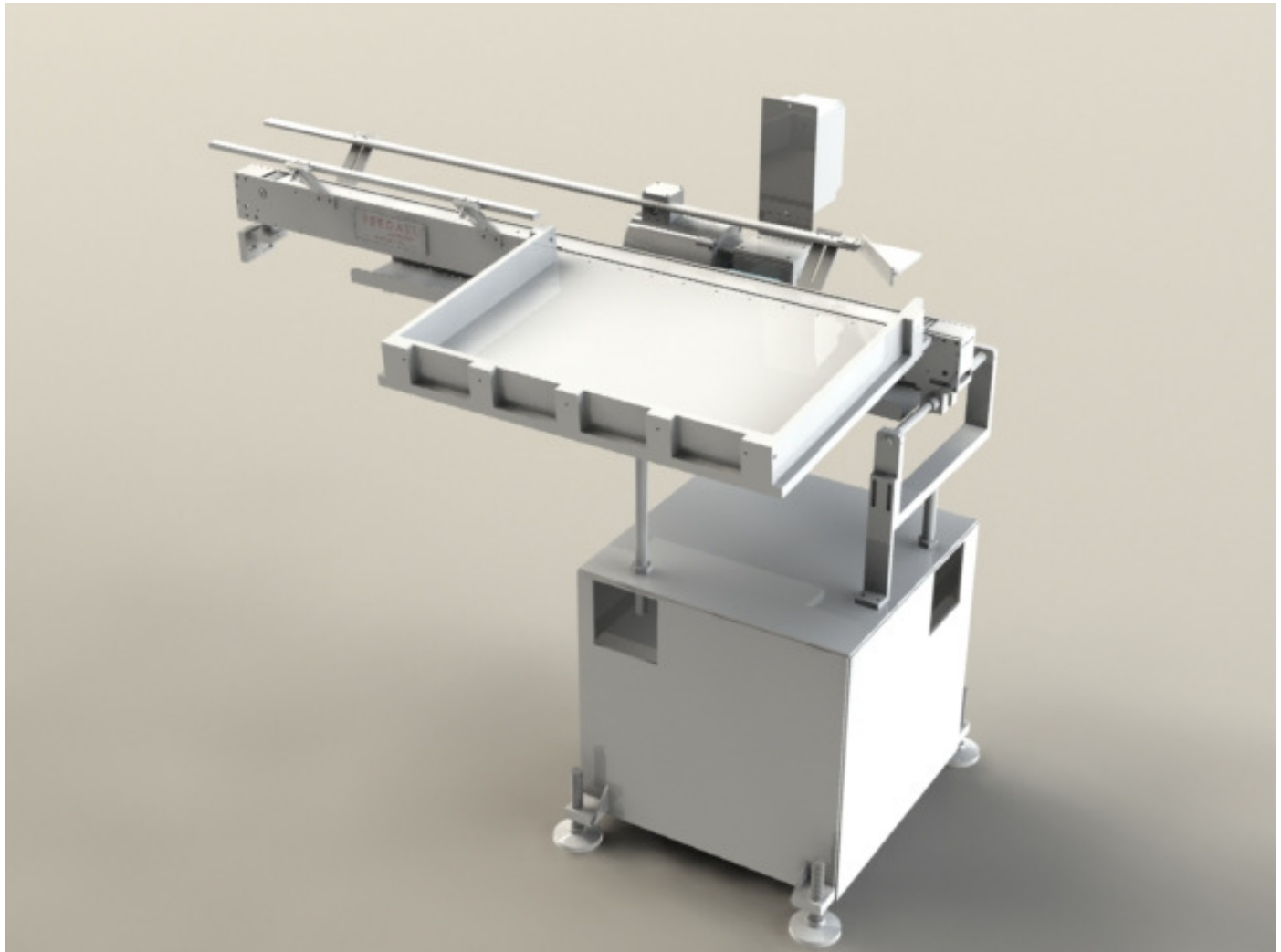


## **FEEDALL Model 1650-2PB-72 Exit Conveyor**



<b>APPLICATION:</b>	Convey Crosshead Pins from the workrest of a CINCINNATI Model 360-20 DE Centerless Grinder to a cam-off device into an adjustable accumulation tray.
<b>BELT WIDTH:</b>	1" Wide Polyurethane Timing Belt
<b>DRIVE:</b>	1/2 HP/AC Motor w/Variable Frequency Controller
<b>BELT SPEED:</b>	1-50 feet/minute
<b>PARTS FED (SIZE):</b>	Crosshead Pins (2.00"-6.25"Ø x 4.0"-12.19" Lg.)
<b>MACHINE FED:</b>	CINCINNATI Model 360-20 DE Centerless Grinder

# FEEDALL Model 1650-2PB-72 Exit Conveyor

