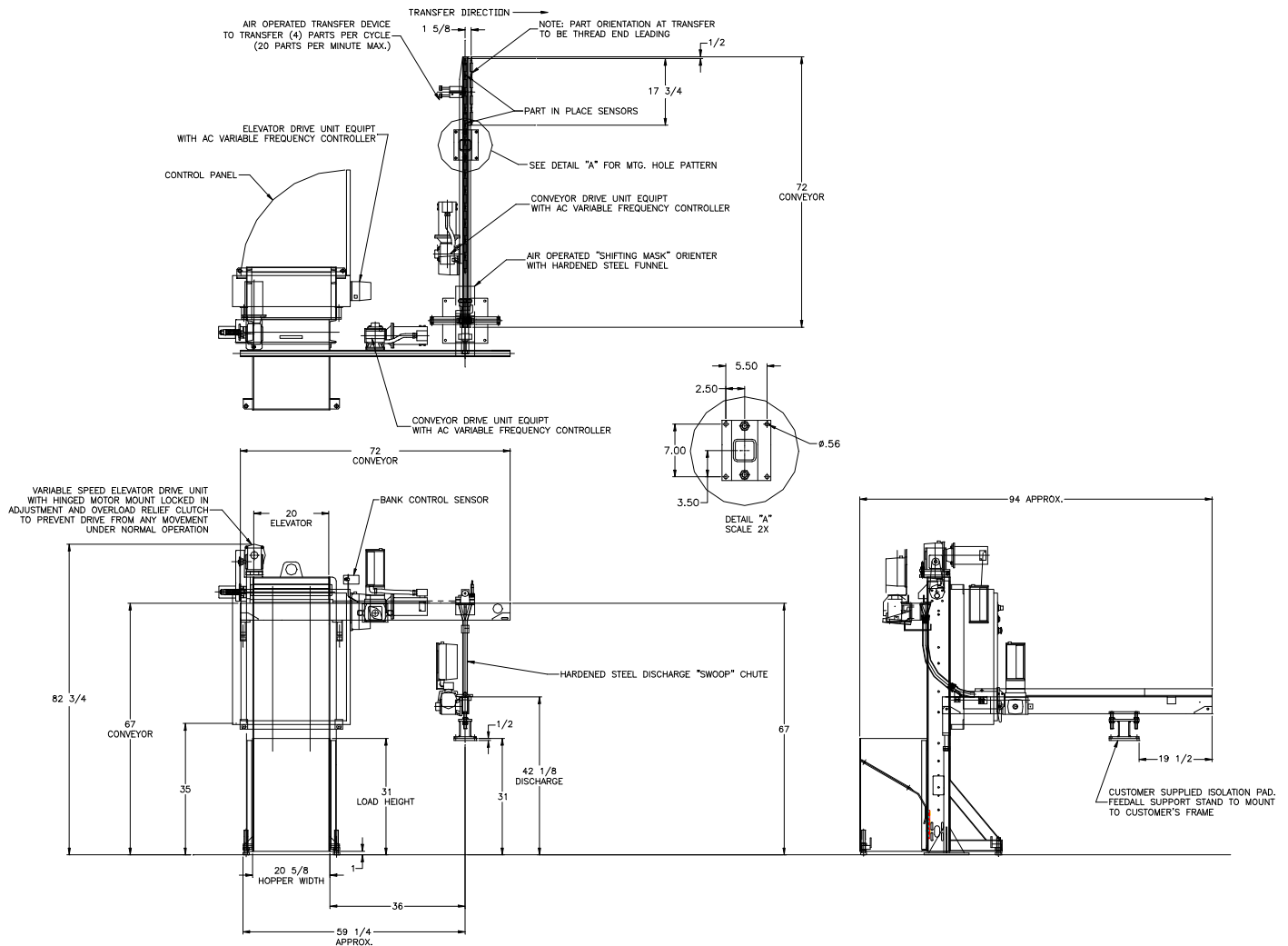


FEEDALL Model 2000 Elevating Hopper Feeder w/1650-1SC-72 Cross-Feed Conveyor & 1650-1SC-72 Discharge Conveyor



APPLICATION:

Feed from a random loaded, floor mounted hopper, Input Shafts. The shafts will be elevated from the hopper via a cleated belt and deposited onto a cross feed conveyor. The conveyor will translate the parts in a continuous, end-to-end stream to an automatic, air-operated "shifting mask" orienting device. The orienting device will discharge the shafts with threaded end leading, axis-horizontal onto discharge conveyor equipped with an air-operated transfer device to load four parts at a time into customer's V-Nest loading an Induction Hardener.

BELT WIDTH:

20" Wide Elevating Belt

ELEVATOR DRIVE:

1/3 HP/AC Motor w/Variable Frequency Controller and Overload Relief Clutch

CONVEYOR DRIVES:

1/4 HP/AC Motor w/Variable Frequency Controller

PARTS FED (SIZE):

Input Shafts (0.625"Ø x 4.37" Lg.)

FEED RATE:

18-20 Parts/Minute

MACHINE FED:

AJAX TOCCO Induction Hardener