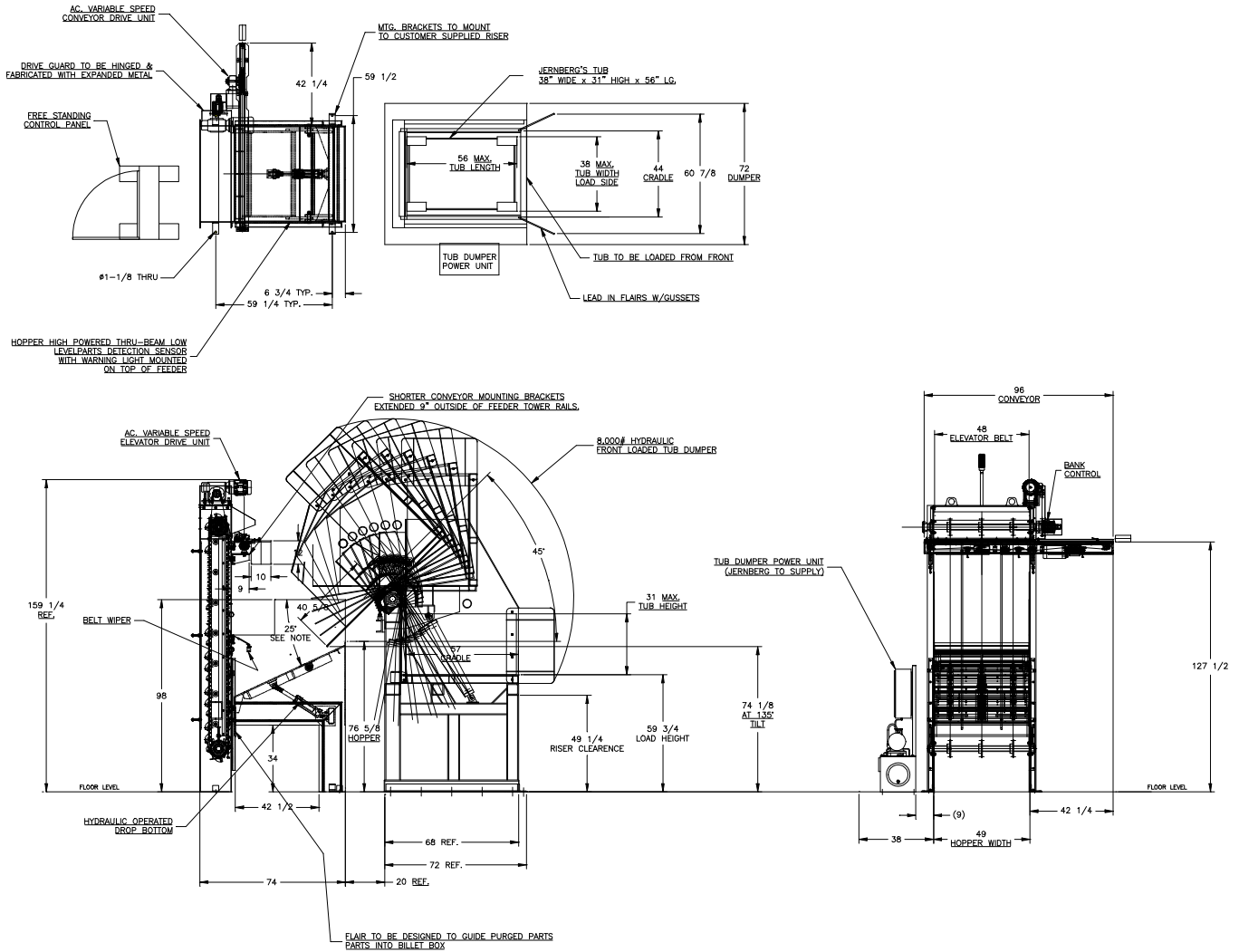


FEEDALL Model 4800 Elevating Hopper Feeder w/1650-80RC-96 Cross-Feed Conveyor & TC-56-43-8,000# Hydraulic Tub Dumper



- APPLICATION:** Feed from a random loaded floor mounted hydraulic tub dumper. The billets will be elevated from the hopper via cleated belt and deposited onto a cross-feed conveyor. The conveyor will translate the parts in a continuous stream into a forging press.
- BELT WIDTH:** 48" Wide Elevating Belt
- DRIVE:** 3 HP/AC Motor
- PARTS FED (SIZE):** Sheared Steel Billets (2.63"-4.13"Ø x 5.82"-20.63" Lg.)
- FEED RATE:** 5-15 Parts/Minute
- MACHINE FED:** Induction Heater