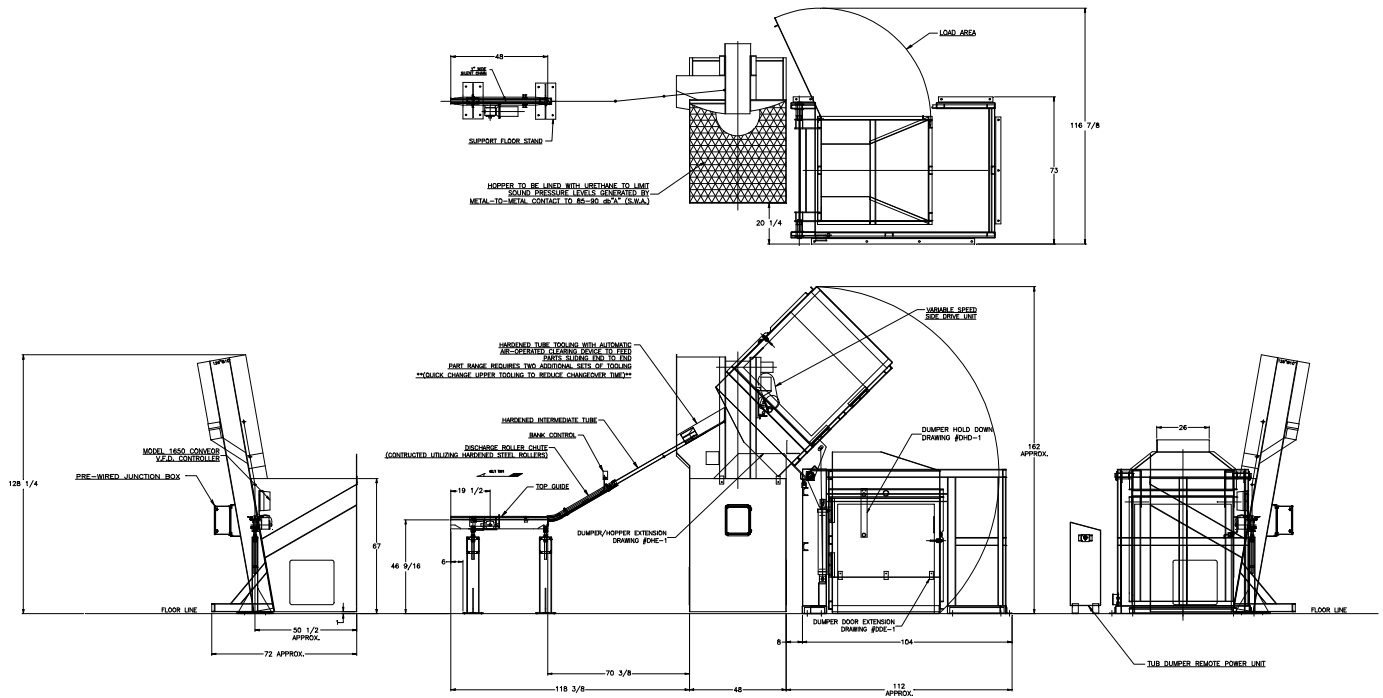


FEEDALL Model 2500-C Elevating Hopper Feeder w/1650-1SC-48 Entrance Conveyor & BCD-53-68-3,000# Hydraulic Tub Dumper



- APPLICATION:** Feed from a random loaded, floor mounted hopper. The metal tubes will be elevated from the hopper via a cleated belt and fed oriented in a continuous end to end stream with axis horizontal onto existing conveyor.
- BELT WIDTH:** 12" Wide Elevating Belt
- DRIVE:** 3/4 HP/AC Motor
- PARTS FED (SIZE):** Suspension Bushing Inner Metal Tubes (17.30mm-34.00Ø x 31.90mm-90.50mm Lg.)
- FEED RATE:** 225 Parts/Minute
- MACHINE FED:** VMI-MTI Roll Coater