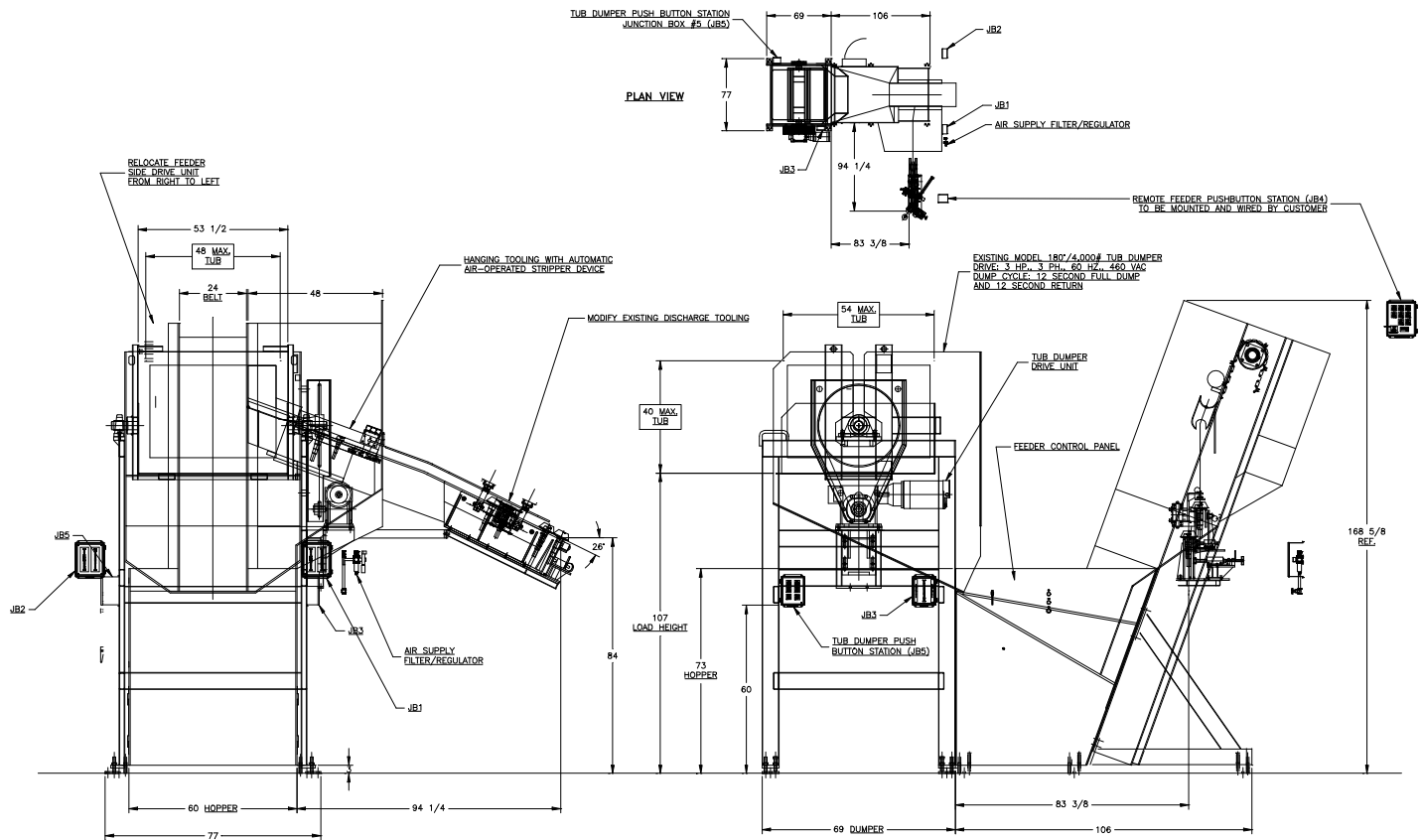


FEEDALL Model 2700-HD Elevating Hopper Feeder w/180° Roll-Over Tub Dumper



- APPLICATION:** Feed from a random loaded, floor mounted hopper. Pinion Shaft Forgings will be elevated from hopper via a cleated belt and orient forgings with stems down into adjustable hanging rails to an air-operated escapement device. This device will escape forgings one at a time into a probe check station that will divert forgings without forged center into a reject chute. The forgings with forged centers will feed into discharge rails to an air-operated transfer device that will feed the existing transfer system on the Nib & Center Press.
- BELT WIDTH:** 24" Wide Elevating Belt
- DRIVE:** 3 HP/AC Motor
- PARTS FED (SIZE):** Pinion Shaft Forgings (2.30"-6.00"Ø x 7.00"-16.00" Lg.)
- FEED RATE:** 10 Parts/Minute
- MACHINE FED:** Nib & Center Press