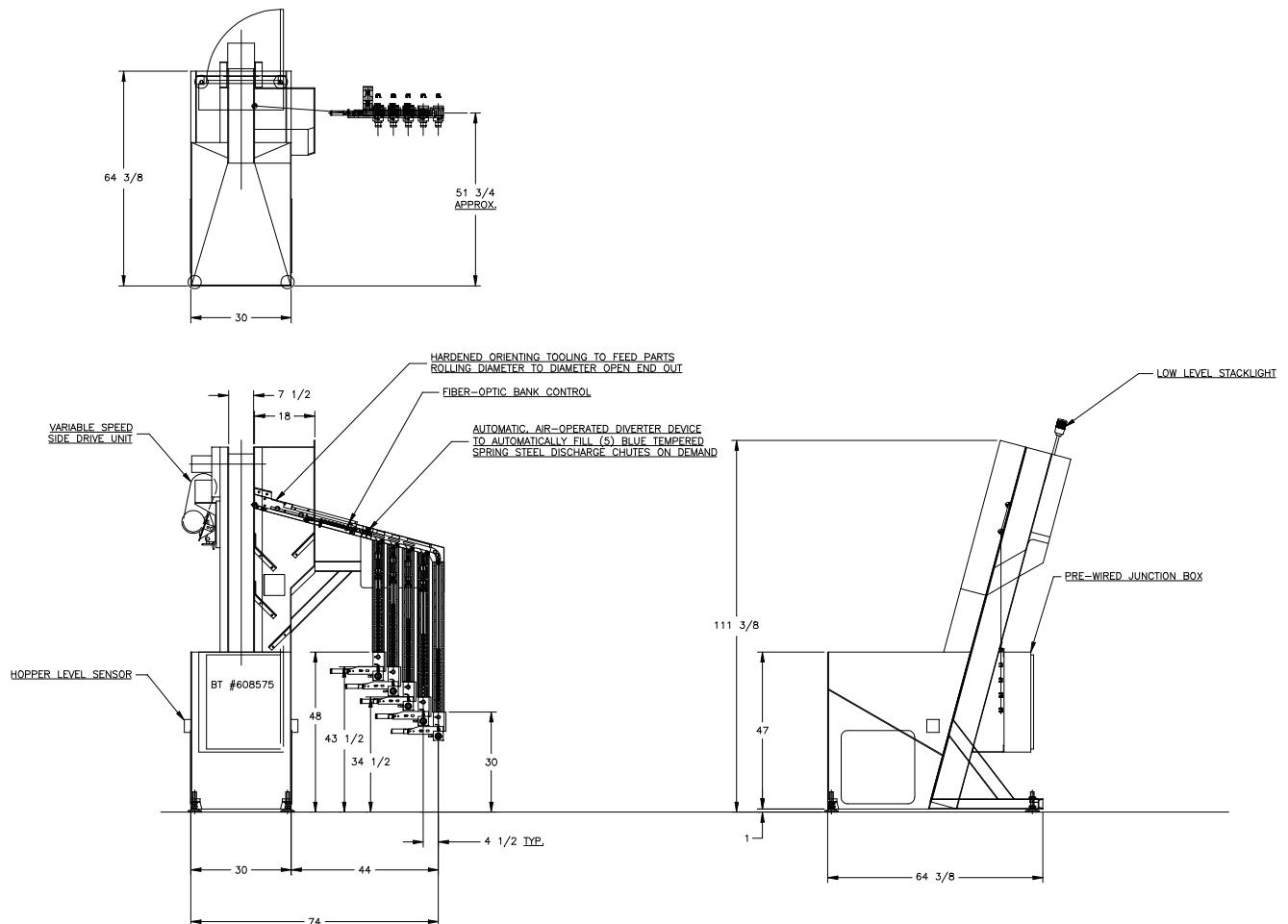


FEEDALL Model 2400-D Elevating Hopper Feeder



- APPLICATION:** Feed from a random loaded, floor mounted hopper. The Bearing Cups will be elevated from the hopper via a cleated belt and discharged rolling, diameter-to-diameter with "cup out" into five streams.
- BELT WIDTH:** 7-1/2" Wide Table-Top Chain
- DRIVE:** 3/4 HP/AC Motor
- PARTS FED (SIZE):** Universal Joint Bearing Cups (1.188"Ø x 0.948" Lg.)
- FEED RATE:** 12 Parts/Minute/Chute
- MACHINE FED:** ID Grinders