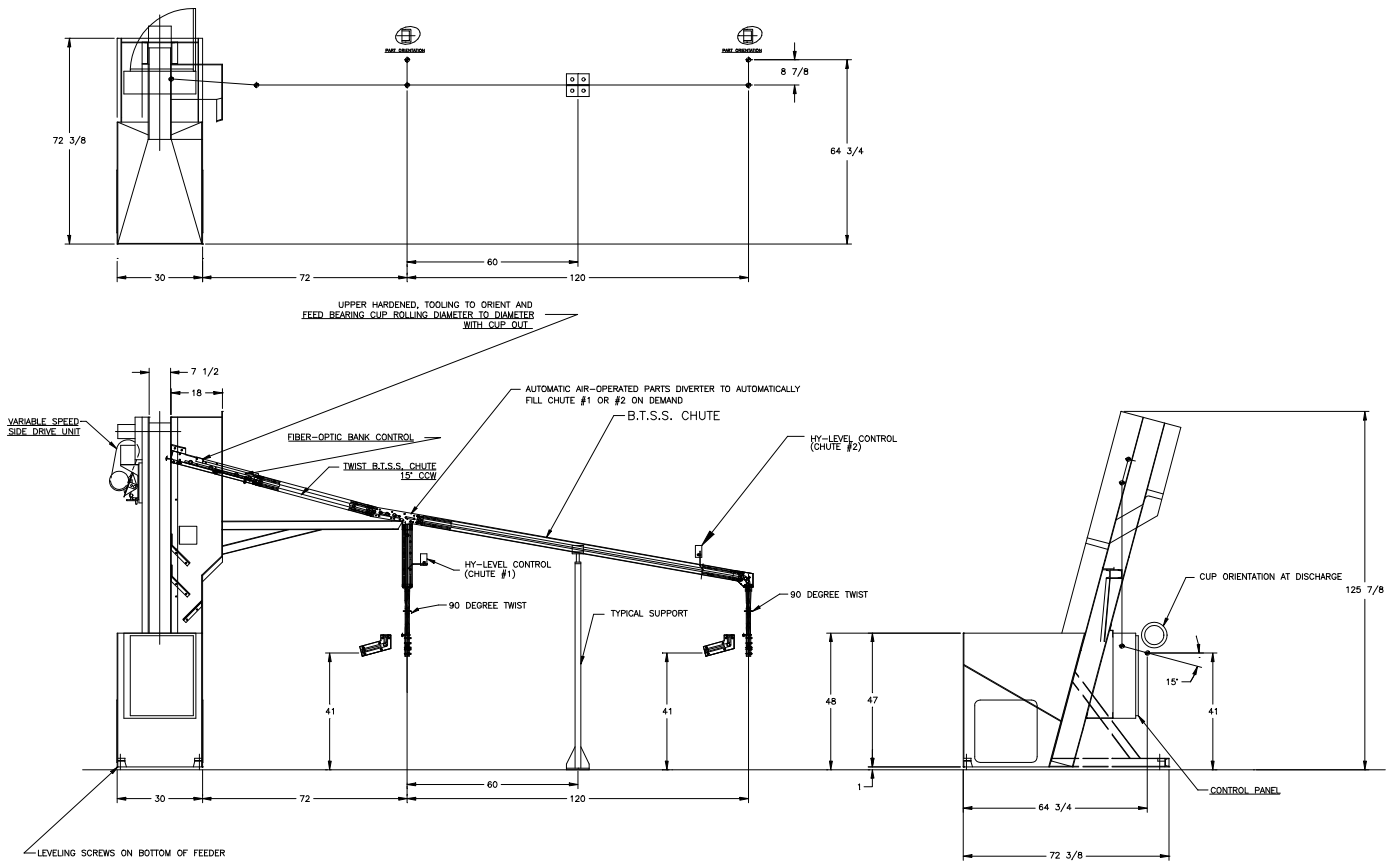


## FEEDALL Model 2400-D Elevating Hopper Feeder



- APPLICATION:** Feed from a random loaded, floor mounted hopper. The Universal Joint bearing Cups will be elevated from the hopper via a cleated belt, face select oriented with open end facing the hopper and discharged in a continuous stream.
- BELT WIDTH:** 7-1/2" Wide Table-Top Chain
- DRIVE:** 3/4 HP/AC Motor
- PARTS FED (SIZE):** Universal Joint Bearing Cups (1.063"-1.188"Ø x 0.79"-1.00" Lg.)
- FEED RATE:** 30 Parts/Minute
- MACHINE FED:** Assembly Machine