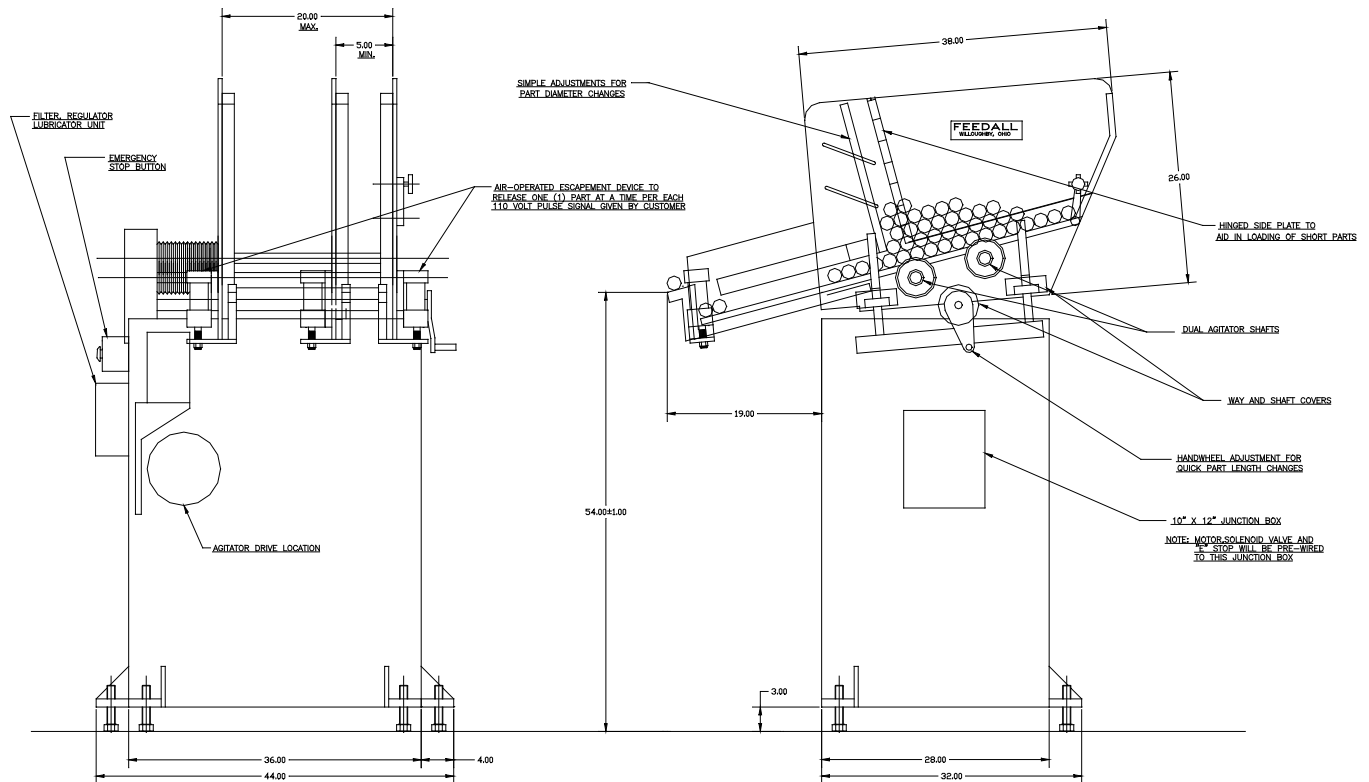


FEEDALL Model 1700-220 Automatic Bar Feeder



APPLICATION: Feed from a manually stacked floor mounted magazine. The Hot Rolled Steel Bars will be escaped rolling from the magazine one at a time to the customer's conveyor.

FEEDALL MODEL: 1700-220 Automatic Bar Feeder

WIDTH: Adjustable

DRIVE: 1 HP/AC Motor

PARTS FED (SIZE): Hot Roller Steel Bars (0.625"-1.313"Ø x 12.00"-15.00" Lg.)

FEED RATE: 10 parts/minute

MACHINE FED: Induction Heater