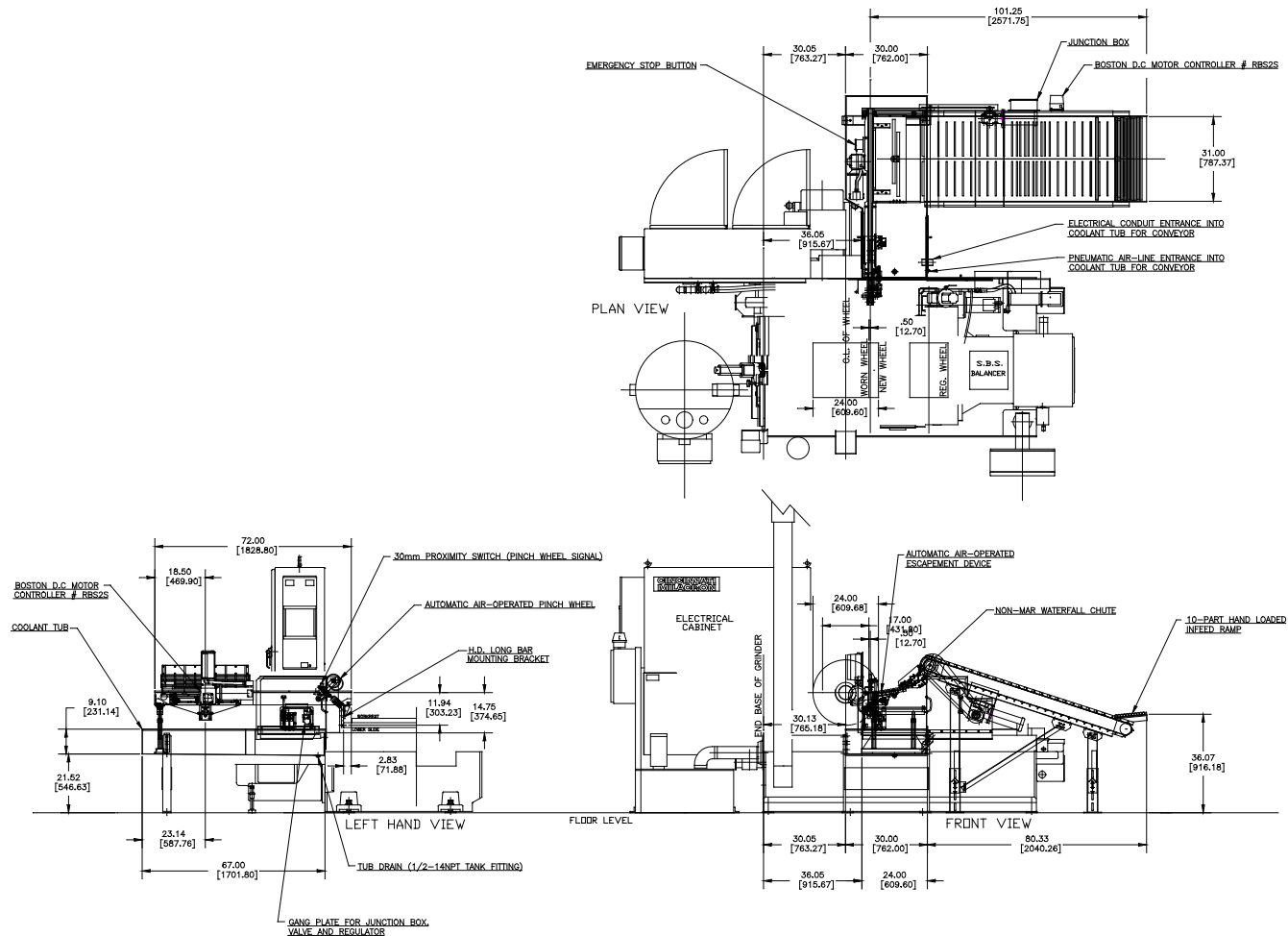


FEEDALL Model E4W-31-9 Cleated Inclined Conveyor w/1650-1PB-72 Conveyor



- APPLICATION:** Convey Steering Racks to a Cincinnati centerless grinder.
- FEEDALL MODEL:** H4W-31-9 Cleated Inclined Conveyor
- BELT WIDTH:** 31" Wide Cleated Belt
- DRIVE:** 3/4 HP 90 VDC Motor
- PARTS FED (SIZE):** Steering Racks (1.00"Ø x 20.00"-30.00" Lg.)
- FEED RATE:** 55 inches/minute
- MACHINE FED:** Cincinnati Centerless Grinder